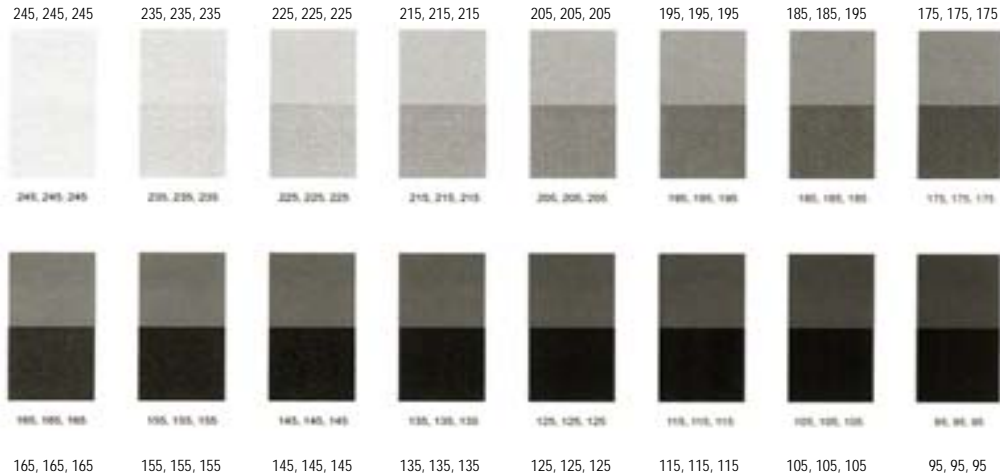


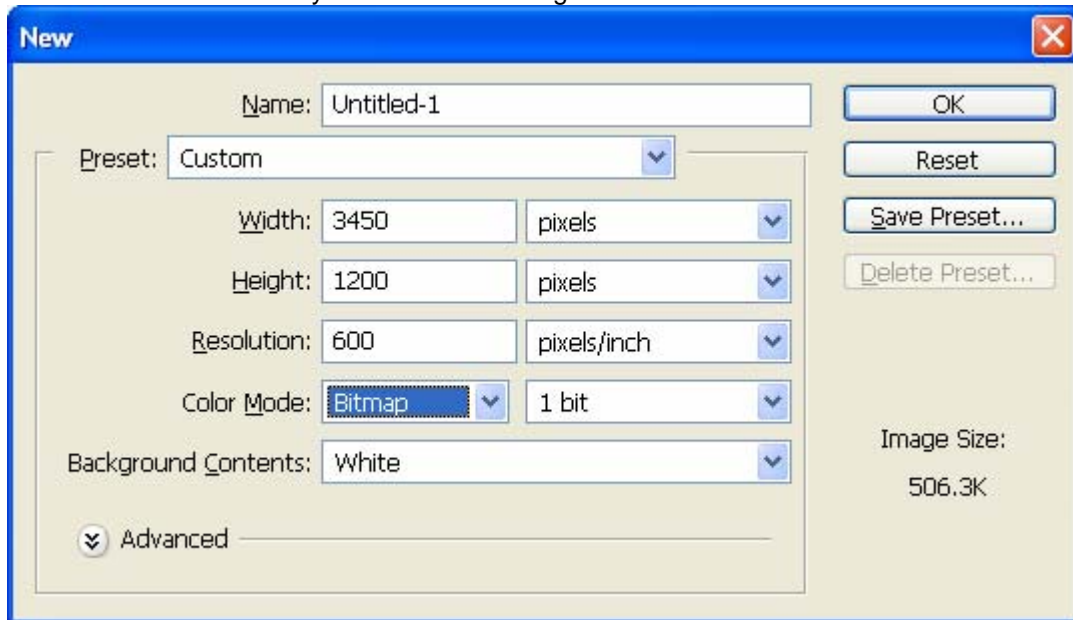
## How to Print Gray with Black Toner (K) Only

1. Select everything that you would like to print gray with K toner only. You may need to fill it with a gray that is lighter than what you actually want to print because the bitmap field that we are going to create will print darker than CMY gray (see sample image below).

The image below will give you an idea of the difference between CMY gray and the same RGB values printed with K toner only. The bottom section of each row is K toner only after being bitmapped and the top section of each row is CMY gray. Notice that the bottom section of each row (K toner) is darker than the top section (CMY).



2. Select all of the gray (now lighter) and cut it from the image. **Edit | Cut**
3. Create a new image. **File | New**
  - Choose **Bitmap** for *Color Mode*
  - All the other fields should remain untouched. It will automatically take the size and resolution from the selection that you cut from the image.



4. Paste the cut selection into the new image. **Edit | Paste**
5. Drag and drop the bitmapped image back into a new layer in the original image. Make sure it lines up exactly.
6. Choose "Always create 100% Black (K) Toner" in the print driver when printing.
7. If the gray prints too dark or too light, delete the layer you just created and repeat the entire process choosing a different gray in step 1.

**Note:** You can also "Save As" a Tiff for use in Custom QuickLabel.